

LOGIK

2-Door Frost Free Fridge Freezer

Instruction Manual
LFC60W10





Contents

| | |
|---|----|
| Unpacking..... | 4 |
| Product Overview..... | 5 |
| Control Panel Overview..... | 6 |
| Installation..... | 7 |
| Location..... | 7 |
| Assembling the Handle..... | 7 |
| Reversing the Door Swing..... | 7 |
| Levelling the Fridge Freezer..... | 10 |
| Cleaning Before Use..... | 10 |
| Before Using Your Fridge Freezer..... | 10 |
| Operating Instructions..... | 11 |
| To Switch On the Refrigerator Compartment..... | 11 |
| To Switch On the Freezer Compartment..... | 11 |
| Alarm..... | 11 |
| Adjusting the Temperature..... | 12 |
| Noises Inside the Fridge Freezer!..... | 12 |
| Shopping for Chilled Foods..... | 12 |
| Tips for Keeping Food Perfect in the Fridge Freezer..... | 13 |
| Shopping for Frozen Foods..... | 13 |
| Preparations for Freezing..... | 13 |
| Defrosting Frozen Food..... | 14 |
| Cleaning..... | 15 |
| Defrosting..... | 15 |
| Cleaning the Interior and the Exterior of the Fridge Freezer..... | 15 |
| Cleaning Tips..... | 15 |
| Maintenance..... | 16 |
| Changing the Internal Light..... | 16 |
| Care When Handling / Moving Your Fridge Freezer..... | 16 |
| Servicing..... | 16 |
| Disposal..... | 16 |
| Specification..... | 17 |
| Safety Warnings..... | 18 |
| Eco Ideas..... | 19 |

Congratulations

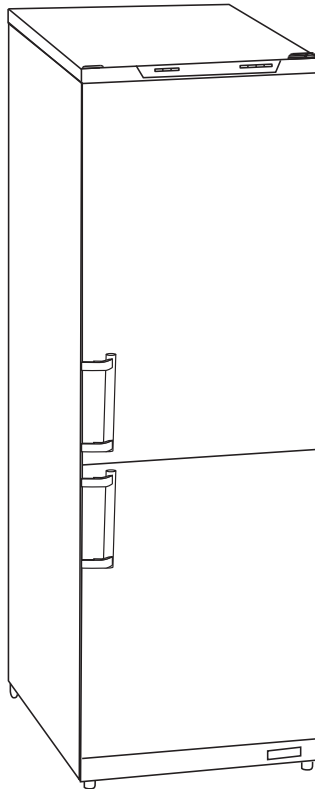
on the purchase of your new Logik Fridge Freezer. We recommend that you spend some time to read this Instruction Manual in order to fully understand how to install and operate it.

Read all the safety instructions carefully before use and keep this instruction manual for future reference.

Unpacking

Remove all packaging from the fridge freezer. Retain the packaging. If you dispose of it please do so according to local regulations.

The following items are included:



The Main Unit



Adjustable Glass Shelf x 3
P.N.: 9210501395



Glass Shelf x 1
P.N.: 9210501395



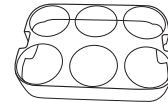
Crisper x 2
P.N.: 9210100198



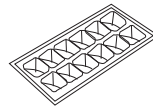
Freezer Drawer x 3
P.N.: 9210800308 (Middle x 2)
9210800309 (Lower)



Ice Tray x 1
P.N.: 9210800307



Egg Tray x 2
P.N.: 210412



Ice Box x 1
P.N.: 21033

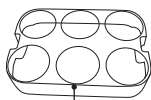
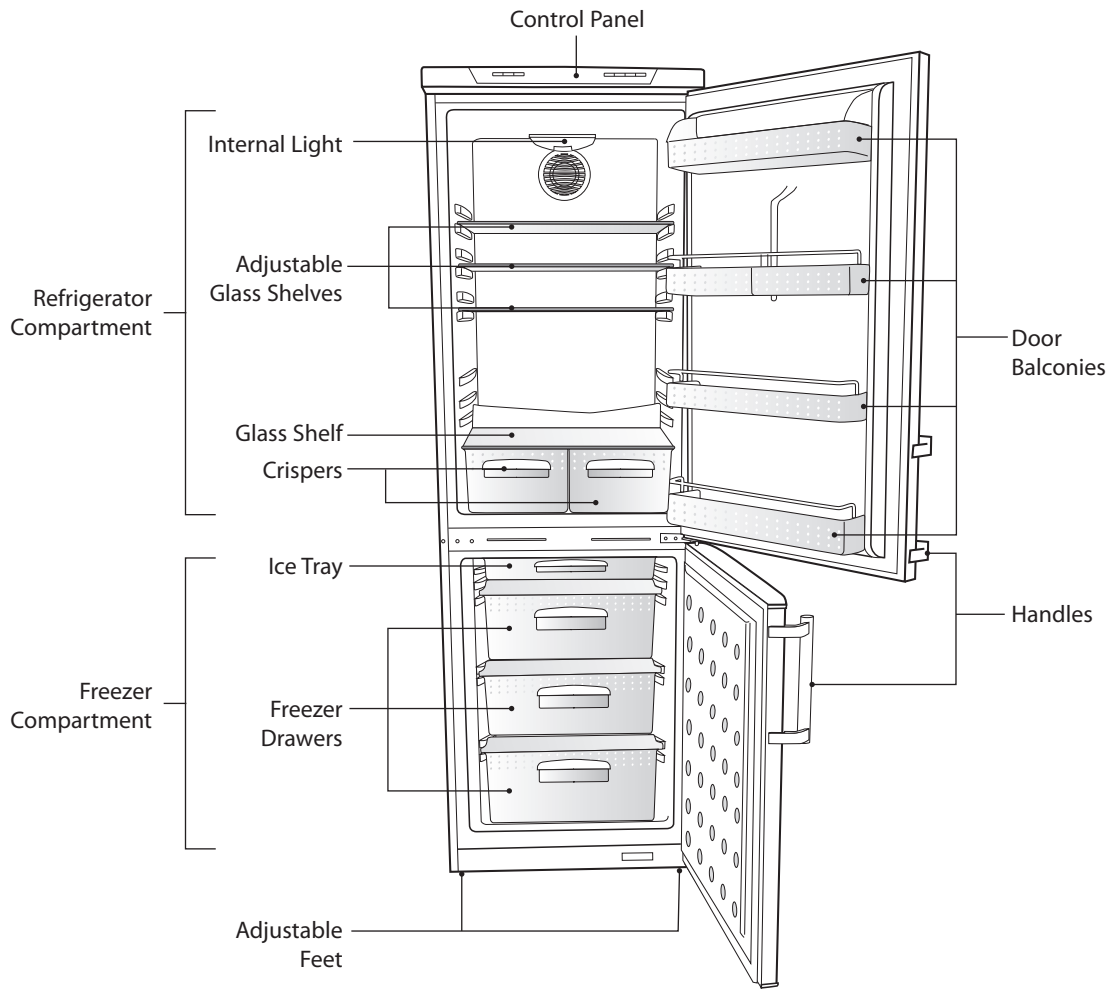


Instruction Manual x 1
P.N.: D5GLGS295

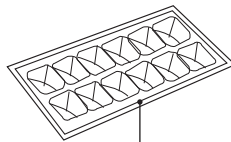


If items are missing, or damaged please contact Partmaster (UK only). Tel: 0870 6001 338 for assistance.

Product Overview



Egg Tray x 2



Ice Box

Before Use

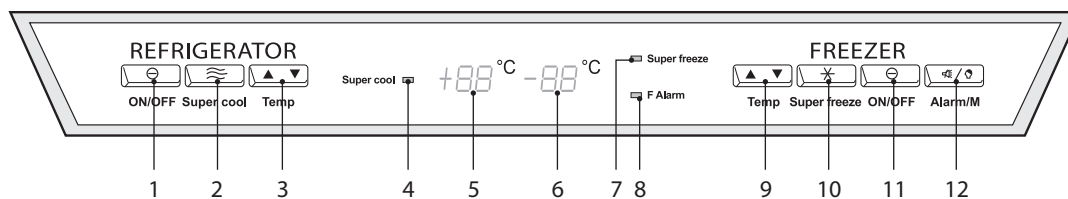
Operation

Cleaning and Maintenance

Specification

Safety Warnings

Control Panel Overview



1. **Refrigerator ON/OFF** \ominus button
To switch on/off the refrigerator compartment.
2. **Super cool** \approx button
To quickly lower the temperature inside the refrigerator.
3. **Refrigerator Temperature** $\blacktriangle\blacktriangledown$ button
Temperature control button for the refrigerator compartment.
4. **Super cool** indicator
Illuminates when the Super cool function is selected.
5. **Refrigerator Temperature** display window
Displays the temperature of the refrigerator.
6. **Freezer Temperature** display window
Displays the temperature of the freezer.
7. **Super freeze** indicator
Illuminates when the Super freeze function is selected.
8. **F Alarm** indicator
Illuminates and flashes when the freezer's temperature is equal to or warmer than -10°C . The freezer alarm will take effect as well. It will sound 3 times every 10 seconds.
9. **Freezer Temperature** $\blacktriangle\blacktriangledown$ button
Temperature control button for the freezer compartment.
10. **Super freeze** \times button
To quickly lower the temperature inside the freezer.
11. **Freezer ON/OFF** \ominus button
To switch on/off the freezer compartment.
12. **Alarm** 🔔 / **High Temp Memory** 🔔 button
 - To turn off the freezer alarm.
 - Allows you to check the highest temperature reached inside freezer compartment.

Installation

Location

When selecting a position for your fridge freezer you should make sure the floor is flat and firm, and the room is well ventilated with an average room temperature of between 16°C and 32°C. Avoid locating your fridge freezer near a heat source, eg. cooker, boiler or radiator. Also avoid direct sunlight as it may increase the electrical consumption. Extreme cold ambient temperatures may also cause the appliance not to perform properly. This fridge freezer is not designed for use in a garage or outdoor installation.

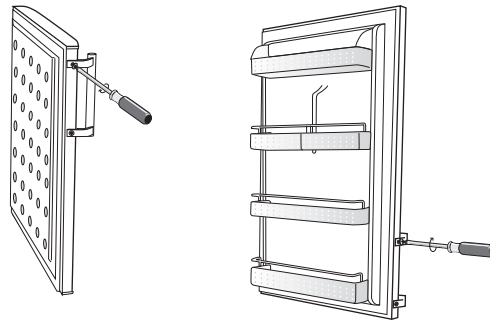
Do not drape the fridge freezer with any covering. When installing, ensure that free space is left at the sides. You may refer to the Overall Space Required in the Specification section. The fridge freezer door can open to the right or the left, depending on what better suits the location.



- If you want to have the door swing reversed, we recommend that you contact a qualified technician. You should only try to reverse the door yourself if you believe that you are qualified to do so.
- All parts removed must be saved to do the reinstallation of the door. You should rest the fridge freezer on something solid so that it will not slip during the door change process. Do not lay the fridge freezer flat as this may damage the coolant system. Ensure the fridge freezer is unplugged and empty. We recommend that 2 people handle the fridge freezer during assembly.

Assembling the Handle

1. Take out the handles and screws from the accessories.
2. Hold the handle onto the door edge and tightened with the screws provided.

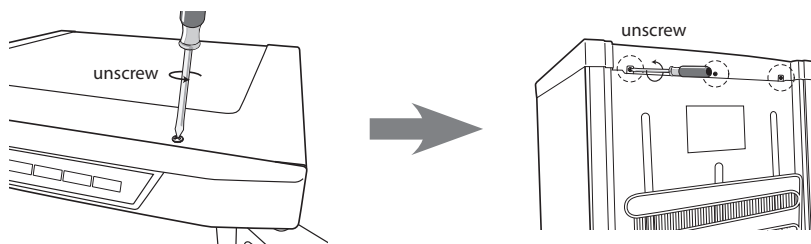


Reversing the Door Swing

To change the opening direction yourself, please follow these instructions:

Tools required: Philips style screwdriver / Flat bladed screwdriver / Hexagonal spanner

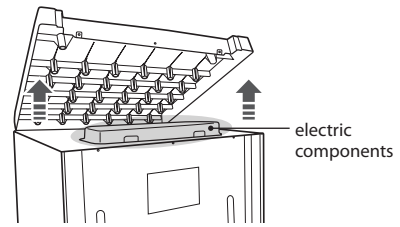
1. Remove all the cover's screw first.



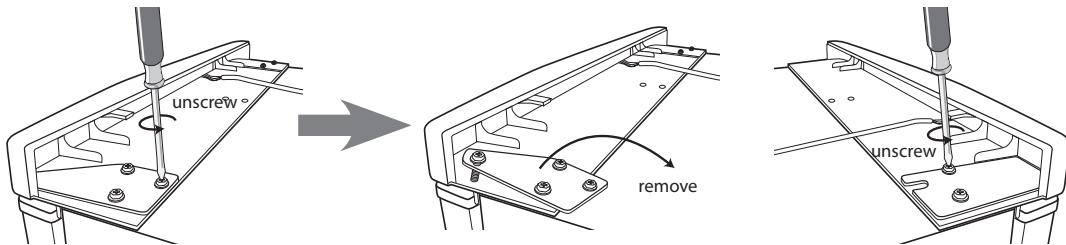
2. Lift the top cover away from the fridge.



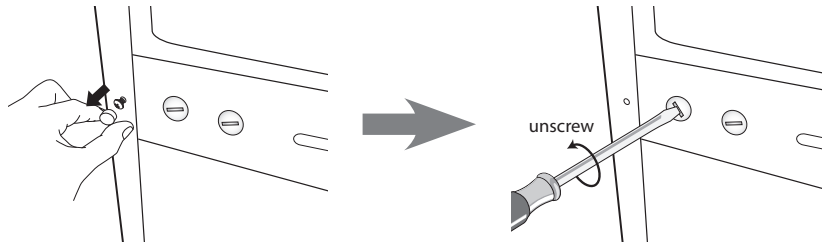
Do not touch the electric components under the top cover.



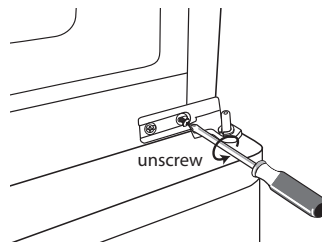
3. Undo the screws, lift all the hinge brackets up and take them off. Lift the fridge door and move it away.



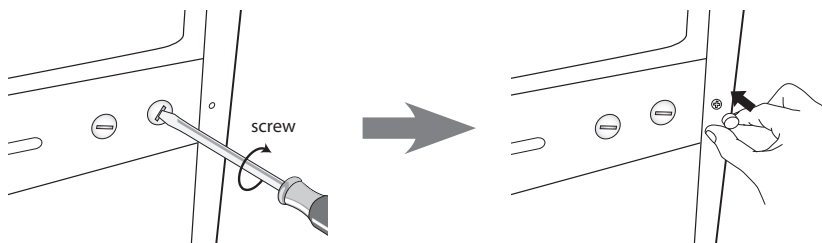
4. Remove the screws' covers and screws.



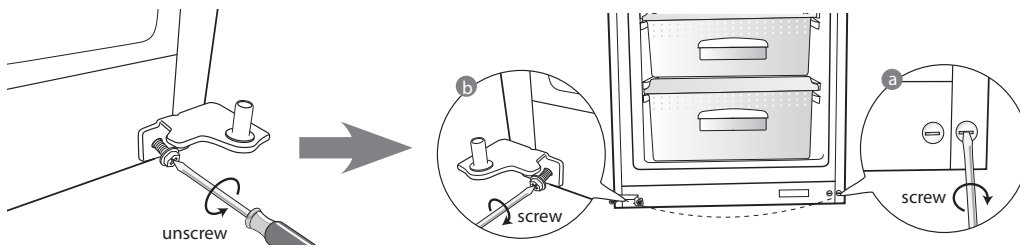
5. Take off the middle hinge by removing the screws. Lift the freezer door up and move it away.



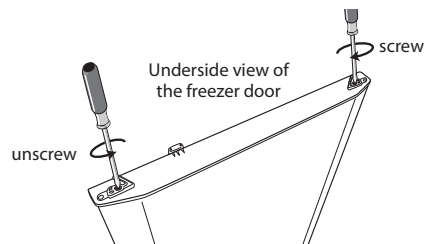
6. Place the screws and screw covers.



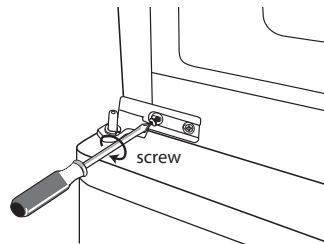
7. Remove the screw from the bottom hinge and refit it to the opposite side.




8. Remove the bottom hinge adapter from the freezer door. Ensure it is securely located.

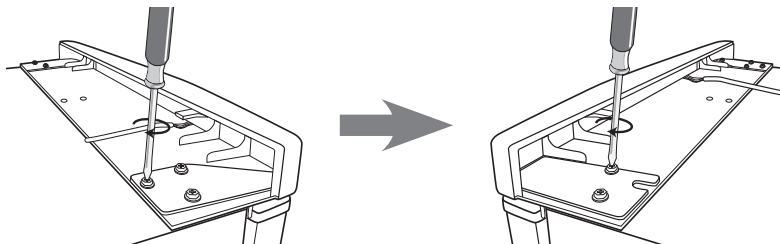


9. Replace the freezer door and ensure it is aligned horizontally and vertically, so that the seals are closed on all sides before finally tightening the hinge.

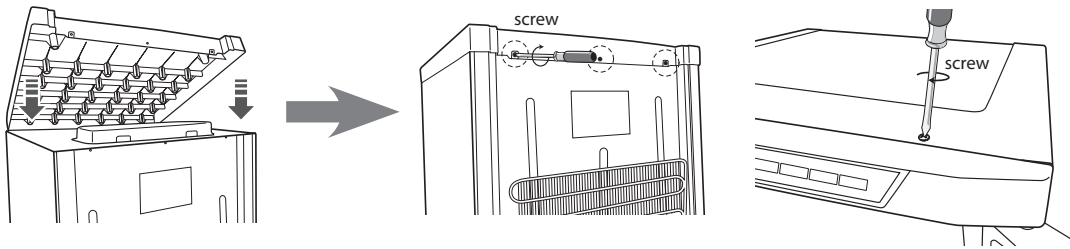


10.  Place the fridge door back on. Ensure the fridge door is aligned horizontally and vertically so that the seals are closed on all sides before finally tightening to top hinge.

Insert the hinge brackets and screw them to the top of the fridge.



11. Put the cover back and tighten it with the screws.

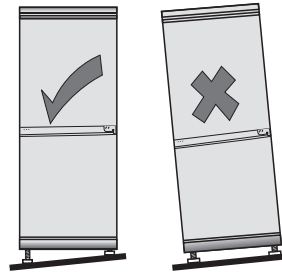


Double check that the door is aligned correctly and all the seals are closed on all sides. If necessary, re-adjust the levelling feet.

Levelling the Fridge Freezer

To do this use the two levelling feet at the front of the fridge freezer.

If the fridge freezer is not level, the door and magnetic seal alignments will not be covered properly.



Cleaning Before Use

Wipe the inside of the fridge freezer with a weak solution of bicarbonate soda. Then rinse with warm water using a 'wrung-out' sponge or cloth. Wipe completely dry before replacing the shelves and salad bin. Clean the exterior of the fridge freezer with a damp cloth.

If you require more information refer to the **CLEANING** section.



- **Before Plugging in YOU MUST**

Check that you have a socket which is compatible with the plug supplied with the fridge freezer.

- **Before Turning On!**



Do not turn on until two hours after moving the fridge freezer. The coolant fluid needs time to settle.

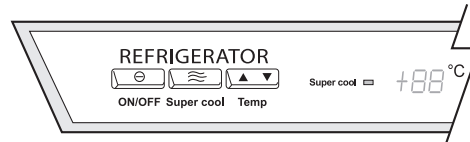
Before Using Your Fridge Freezer

Before placing any food in your fridge freezer, turn it on and wait for 24 hours, to make sure it is working properly and to allow the fridge freezer to fall to the correct temperature. Your fridge freezer should not be overfilled.



Operating Instructions

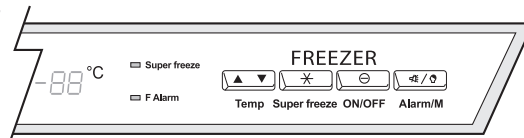
To Switch On the Refrigerator Compartment

1. Press the **ON/OFF**  button to turn on the refrigerator compartment.
2. Press the **▲▼** buttons to adjust the temperature of the refrigerator compartment. The temperature setting should be in-between +1°C to +10°C.
3. If you need the temperature inside the refrigerator to drop rapidly, press the **Super cool**  button to turn on the super cool mode.



To Switch On the Freezer Compartment

1. Press the **ON/OFF**  button to turn on the freezer compartment.
2. Press the **▲▼** buttons to adjust the temperature of the freezer compartment. The temperature setting should be in-between -18°C to -24°C.
3. If you need to fast freezing your food, press the **Super freeze**  button to turn on the super freeze mode.



Alarm

Alarm for Door

If the door is left open for 2 minutes, the alarm will sound to remind you to close the door. If the door remains open, the alarm will sound 3 times every 30 seconds and last for 10 minutes. After 10 minutes the alarm will stop automatically.

Alarm for Freezer's Temperature

1. When freezer's temperature is equal to or warmer than -10°C, this over-temperature alarm takes effect. It will sound 3 times every 10 seconds and the alarm indicator (LED) on the control panel will begin to flash.



When the refrigerator runs for the first time, the alarm indicator (LED) will flash.

2. The alarm will last for 2 minutes, and then stops sounding. However, the alarm indicator (LED) will continue flashing until the freezer's temperature is equal to or less than -10°C.
3. Press the **Alarm/M** button to stop the alarm sound. However, the alarm indicator will remain illuminated until the freezer's temperature is equal to or less than -10°C.

High Temperature Memory

1. In case of power outage, the Freezer Memoriser will automatically record the highest temperature reached inside the freezer compartment. When the power has resumed and the freezer is turned on, the alarm indicator (LED) will flash to remind you that the power has been set off.
2. Press the Alarm/M button to check the highest temperature reached inside freezer compartment. It will display on the Freezer Temperature Display of the control panel. Please check the quality of your food to determine if they can still be used.
3. Once the freezer's temperature reaches -10°C or lower, the alarm indicator (LED) will turn off.

Adjusting the Temperature

The internal temperature of your fridge compartment and freezer compartment are controlled by the control panel switches. The fridge freezer may not operate at the exact temperature if it is operating in colder (i.e. during winter) or hotter environments (i.e. during summer), or if you open the doors too often.

Noises Inside the Fridge Freezer!

If you have not owned a fridge freezer before, you may notice that it makes some rather unusual noises. Most of these are perfectly normal, but you should be aware of them!

These noises are caused by the circulation of the refrigerant liquid in the cooling system. It has become more pronounced since the introduction of CFC free gases. This is not a fault and will not affect the performance of your fridge freezer. This is the compressor motor working, as it pumps the refrigerant around the system.


Shopping for Chilled Foods

- Take a quick look at the chilled food package and make sure it is in perfect condition.
- Try to keep chilled food together whilst shopping and on the journey home as this will help to keep the food cold.
- Don't buy chilled food unless you can chill it straight away. Specially insulated bags can be bought from most supermarkets and hardware shops. These bags can keep chilled food cold for longer while transporting.
- Food that has been left in a car or at room temperature for a prolonged period of time could raise the food temperature to a dangerous level, which allows harmful bacteria to grow.
- Always unpack and place chilled food in the fridge freezer before storing dry food.

Tips for Keeping Food Perfect in the Fridge Freezer

- Cooked meats/fishes should always be stored on a shelf above raw meats/fishes to avoid bacterial transfer. Keep raw meats/fishes in a container which is large enough to collect juices and cover it properly. Place the container on the lowest shelf at the bottom of the fridge freezer.
- Leave space around your food, to allow air to circulate inside the fridge freezer. Ensure all parts of the fridge freezer are kept cool.
- To prevent transfer of flavours and drying out, pack or cover the food separately. Fruit and vegetables do not need to be wrapped.
- Always let pre-cooked food cool down before you put in the fridge freezer. This will help to maintain the internal temperature of the fridge freezer.
- To prevent cold air escaping from the fridge freezer, try to limit the number of times you open the door. We recommend that you only open the door when you need to put food in or take food out.

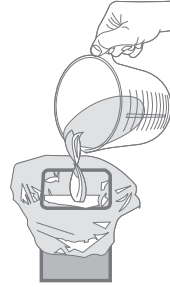
Shopping for Frozen Foods

- Your freezer compartment is 4-star.  When you are buying frozen food, check the storage guidelines on the packaging. You will be able to store each item of frozen food for the period shown against the 4-star rating. This is usually the period stated as “Best before” on the front of the packaging. The maximum freezing capacity of this fridge freezer is 9.5kg in 24 hours. Do not place fresh food into the freezer compartment exceeding this weight.
- Check the temperature of the frozen food cabinet in the shop where you buy your frozen foods. It should show a temperature lower than -18°C.
- Take a quick look at the frozen food package and make sure it is in perfect condition.
- Always buy frozen products last on your shopping trip or visit to the supermarket. Try to keep frozen food together whilst shopping and on the journey home as this will help to keep the food cold.
- Don't buy frozen food unless you can freeze it straight away. Specially insulated bags can be bought from most supermarkets and hardware shops. These bags can keep frozen food frozen longer.

Preparations for Freezing

- Use quality food and handle it as little as possible. Freeze food in small quantities as it freezes faster, takes less time to defrost and enables you to control the quantity you need better.
- Leave cooked food to cool completely. Chill food in a fridge freezer before freezing if possible.
- Consider how you will want to cook the food before freezing it.
- Don't freeze food in metal containers if you may want to microwave it straight from the fridge freezer.
- Use special freezer bags, freezer film, polythene bags, plastic containers, and aluminium foil (heavy duty grade only). If in doubt, double wrap your food. Don't use aluminium foil for acidic foods, e.g. citrus fruits. Don't use thin cling film, glass, nor used food containers without cleaning.
- Exclude as much air from the container as possible. You could buy a special vacuum pump which sucks excessive air out of the packaging.
- Leave a small amount of air space when freezing liquids to allow expansion.

- You can use the space in the fridge freezer most efficiently if you freeze liquids (or solids with liquids, e.g. stew) in square blocks. This is known as "Preforming". Pour the liquid into a polythene bag which is inside a square sided container. Freeze it, and then remove it from the container and seal the bag.
- Label your frozen foods as they will look the same when in frozen state. Use special freezer tapes, labels and pens with different colours. This allows you to easily organise and to effectively use the fridge freezer. Write the contents and date; otherwise the frozen food might exceed the storage time and this could cause food poisoning. Please refer to your food packaging for the recommended storage time.
- You may also add the weight and cooking notes, e.g. "defrost first", "cook from frozen" and keep a separate log of what is in each drawer. This will save opening the door and searching around unnecessarily.



Defrosting Frozen Food

1. Take the frozen food out from the freezer compartment and uncover the frozen food. Let it defrost at room temperature. Don't forget that defrosting in a warm area encourages the growth of bacteria and low temperature cooking may not destroy dangerous bacteria.
2. Drain off and throw away any liquid lost during defrosting.
3. Always make sure there are no ice-crystals in the food before cooking, particularly with meat. These crystals indicate that the food has not fully defrosted.
4. Cook food as soon as possible after defrosting.
5. Many microwaves and ovens have a defrost setting. To avoid bacterial build up, only use these if you intend to cook the food immediately afterwards.



Never refreeze anything that has been defrosted out unless you cook it again, to kill off harmful bacteria. Never re-freeze defrosted shellfish. Re-seal packs properly after removing items. This prevents drying or freezer-burn and a build up of frost on any remaining food.

Cleaning

Defrosting

This fridge freezer is a Frost Free unit. With proper use, there should not be any frost accumulated. However, in case of improper use of the freezer, frost might build up in the freezer compartment after the fridge has been used for a period of time. Scrape away the frost using a plastic scraper (not included).



Do not use a metal or sharp instrument to scrap away the frost, nor should you use any electrical appliances to aid defrosting.

We recommend that defrosting should be carried out when the frost layer builds up to 3cm (~1.18"). Choose a time when the stock of frozen food is low, follow these procedures:

1. Take out the chilled food, turn the fridge freezer off at the mains supply and leave the door open. Ideally, the frozen food should be put into another freezer compartment or refrigerator. If this is not possible, wrap the food in several sheets of newspaper or large towels and then a thick rug or blanket to keep it cool.
2. Place a shallow bowl or pan below the freezer compartment. Scrape away the frost using the plastic scraper. Defrosting the remaining frost can be speeded up by placing a bowl of hot water inside the freezer compartment cabinet and closing the door. As the solid frost loosens, scrap it away with the plastic scraper and remove.
3. When defrosting is complete, clean your fridge freezer's interior and exterior.



Cleaning the Interior and the Exterior of the Fridge Freezer

- Wipe the inside of the fridge freezer with a weak solution of bicarbonate soda and then rinse with warm water using a 'wrung-out' sponge or cloth. Wipe completely dry before replacing the shelves and drawers.
- Use a damp cloth to clean the fridge freezer exterior, and then wipe with a standard furniture polish. Make sure that the door is closed to avoid the polish getting on the magnetic door seal or inside the fridge freezer.
- The grille of the condenser at the back of the fridge freezer and the adjacent components can be vacuumed using a soft brush attachment.

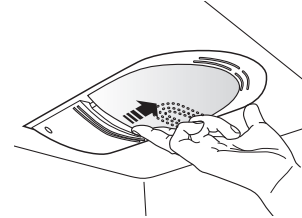
Cleaning Tips

- Condensation may appear on the outside of the fridge freezer. This maybe due to a change in room temperature. Wipe off any moisture residue. If the problem continues, please contact a qualified technician for assistance.

Maintenance

Changing the Internal Light

1. Before carrying out the bulb replacement always press and turn the thermostat control dial to Position OFF, then disconnect the mains supply.
2. Remove the light bulb cover.
3. Remove the old bulb by unscrewing in an anticlockwise direction.
4. Replace with a new bulb (10W) .
5. Refit the light cover and reconnect your fridge freezer to the mains supply and switch on.



Care When Handling / Moving Your Fridge Freezer

Hold the fridge freezer around its sides or base when moving it. Under no circumstances should it be lifted by holding the edges of the top surface.

Servicing

This fridge freezer should be serviced by an authorised engineer and only genuine spare parts should be used. Under no circumstances should you attempt to repair the fridge freezer yourself. Repairs carried out by inexperienced persons may cause injury or serious malfunction. Contact a qualified technician.

When the fridge freezer is not in use for a long period of time, disconnect it from the mains supply, empty all food and clean the appliance, leaving the door ajar to prevent unpleasant smells.

Disposal

Old appliances still have some residual value. An environmentally friendly method of disposal will ensure that valuable raw materials can be recovered and used again. The refrigerant used in your appliance and insulation materials require special disposal procedures. Ensure that none of the pipes on the back of the appliance are damaged prior to disposal.

Up to date information concerning options of disposing of your old appliance and packaging from the new one can be obtained from your local council office.

When disposing of an old appliance break off any old locks or latches as a safeguard.

Specification

| | |
|--|---|
| Model | LFC60W10 |
| Overall Dimension (W x D x H) | 595 x 664 x 1834 mm |
| Overall Space Required in Use (W x D x H) | 1282 x 1300 x 1934 mm |
| Total Gross Volume | 310 litres |
| Fresh Food Storage Compartment Volume | 202 litres |
| Frozen Food Storage Volume | 93 litres * ** * |
| Defrosting Type | Frost free |
| Storage Temperature | Freezer: ≤ -18 °C, Fridge: 0-8 °C, average ≤ 4°C |
| Energy Consumption | 0.973 kWh/24h |
| Energy Grading | A |
| Temperature Rise | > 600 mins. |
| Freezing Capacity | 9.5 kg/24h |
| Power Consumption | 190 W |

Features and Specification are subject to change without prior notice.

Before Use

Operation

Cleaning and Maintenance

Specification

Safety Warnings

Safety Warnings

For your continued safety and to reduce the risk of injury or electric shock, please follow all the safety precautions listed below.

- Read all instructions carefully before using the fridge freezer and keep them for future reference.
- Retain the manual. If you pass the fridge freezer onto a third party, make sure to include this manual.
- Keep ventilation openings in the appliance enclosure clear of obstructions.
- Do not use mechanical devices or other means to accelerate the defrosting process, other than those recommended by the manufacturer.
- Do not use electrical appliances inside the food storage compartments of the fridge freezer, unless they are of the type recommended by the manufacturer.
- If the mains cable is damaged, it must be replaced by the manufacturer, its service agent or a qualified technician in order to avoid a hazard.
- Choose a location for your fridge freezer away from heat sources such as radiators or fires as refrigerant and vesicant are burnable.
- Young children should be supervised to ensure that they do not play with the fridge freezer.
- Do not damage the refrigerant circuit (applicable only for appliances with refrigeration circuits which are accessible to the user).
- The fridge freezer must be maneuvered by a minimum of 2 persons.
- This fridge freezer is not intended for use by persons (including children) with reduced sensory or mental capabilities, or lack of experience and knowledge unless they have been given supervision or instructions concerning the use of the fridge freezer by a person responsible for their safety.
- If your fridge freezer is fitted with a lock to prevent children being trapped inside, keep the key out of reach and not in the vicinity of the fridge freezer.

WARNING



IT IS HAZARDOUS FOR ANYONE OTHER THAN AUTHORISED SERVICE PERSONNEL TO CARRY OUT SERVICING OF REPAIRS WHICH INVOLVE THE REMOVAL OF COVERS.



TO AVOID THE RISK OF AN ELECTRICAL SHOCK DO NOT ATTEMPT REPAIRS YOURSELF.

| | Normal energy consumption | Increased energy consumption |
|--------------------------|---|---|
| Installation site | <p>In a ventilated room.</p> <p>Protected from direct sunlight.</p> <p>Not situated near to a heat source (radiator, oven).</p> <p>Where the ideal ambient room temperature is approx 20°C.</p> | <p>In an enclosed, unventilated room.</p> <p>In direct sunlight.</p> <p>Situated near to a heat source (radiator, oven).</p> <p>Where there is a high ambient room temperature.</p> |
| Use | <p>Only open the doors when necessary and for as short a time as possible.</p> <p>Store food in an organised way.</p> <p>Allow hot food and drinks to cool down before placing them in the appliance.</p> <p>Store food covered or packaged.</p> <p>Place frozen food in the refrigerator to defrost.</p> <p>Do not over-fill the appliance to allow air to circulate.</p> <p>Do not set temperature any colder than necessary.</p> | <p>Frequent opening of the doors for long periods with cause a loss of coldness.</p> <p>If food is not stored in an organised way, searching for an item will mean the door is open for longer.</p> <p>Placing hot food in the appliance will cause the compressor to run for a long time, as the appliance will have to work harder to lower the temperature.</p> <p>The evaporation or condensation of liquids will cause a loss of coldness in the refrigerator.</p> |
| Defrosting | <p>Defrost the freezer compartment when a layer of ice 3 cm thick has built up.</p> | <p>A layer of ice hinders the cold from reaching the frozen food, and causes an increase in energy consumption.</p> |

If you require a replacement for any of the items listed below, please quote their corresponding part numbers:

| Replacement Part | Part Number |
|------------------------|---|
| Adjustable Glass Shelf | 9210501395 |
| Glass Shelf | 9210501395 |
| Crisper | 9210100198 |
| Freezer Drawer | 9210800308 (Middle) 9210800309 (Lower) |
| Ice Tray | 9210800307 |
| Egg Tray | 210412 |
| Ice Box | 21033 |
| Instruction Manual | DSGLGS295 |



Visit Partmaster.co.uk today for the easiest way to buy electrical spares and accessories. With over 1 million spares and accessories available we can deliver direct to your door the very next day. Visit www.partmaster.co.uk or call 0870 6001 338 (UK customers only) Calls charged at National Rate.



This symbol on the product or in the instructions means that your electrical and electronic equipment should be disposed at the end of its life separately from your household waste. There are separate collection systems for recycling in the EU.

For more information, please contact the local authority or your retailer where you purchased the product.

DSG Retail Ltd • Maylands Avenue • Hemel Hempstead •
Herts • HP2 7TG • England

(P.N.: DSGLGS295)